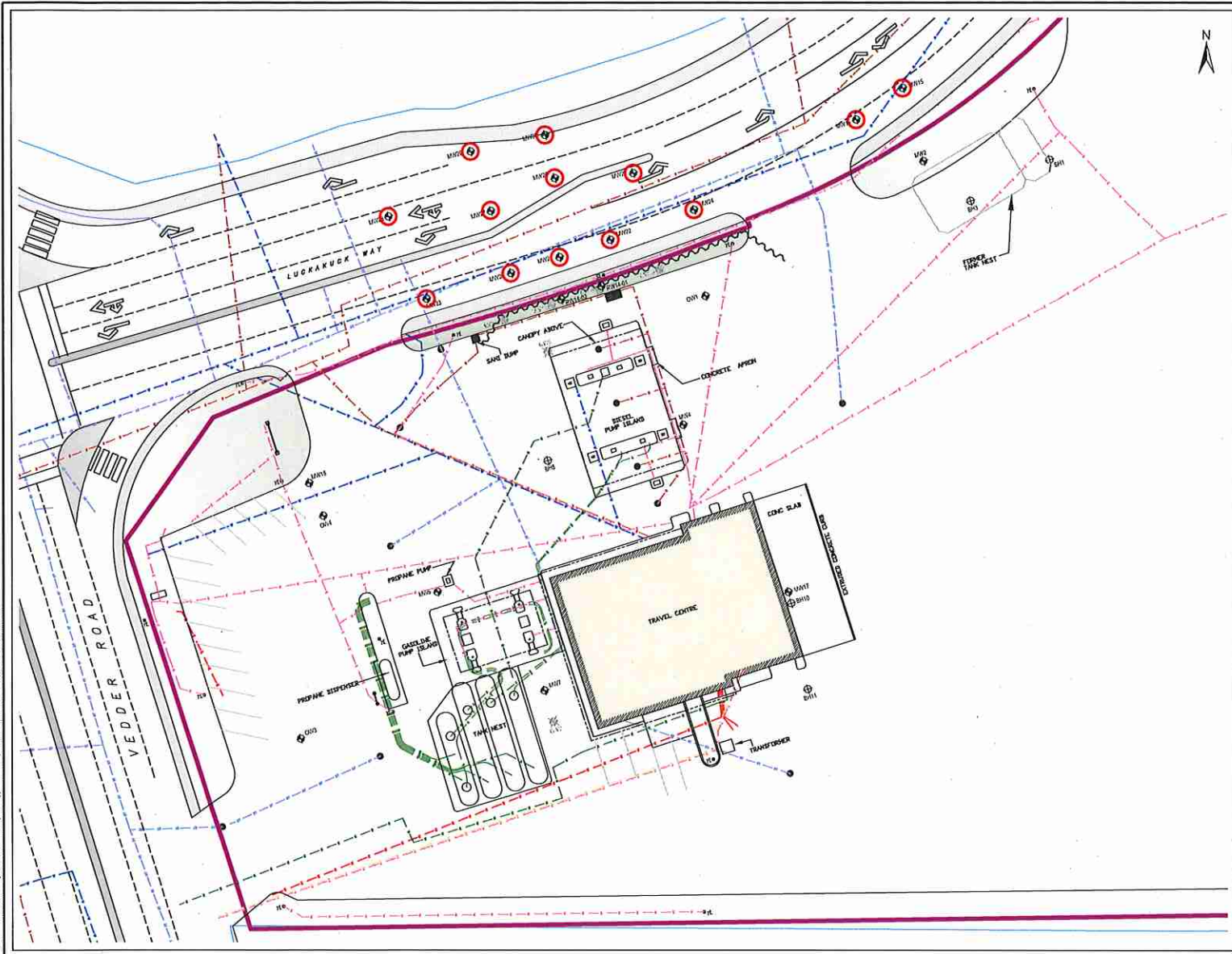


BASE: Z:\WORK\Projects\2421 - Husky Energy - 141422 (Chilliwack)\CAD\1422_Base Documents.dwg



LEGEND

- Site Property Boundary
- Existing Structure
- Electrical
- Sanitary Sewer
- Storm Sewer
- Water Main
- Gas Line
- Telephone Line
- Sheet Pile Wall
- Catchbasin
- Yard Light
- Borehole
- Monitoring Well
- Monitoring Well (Destroyed)

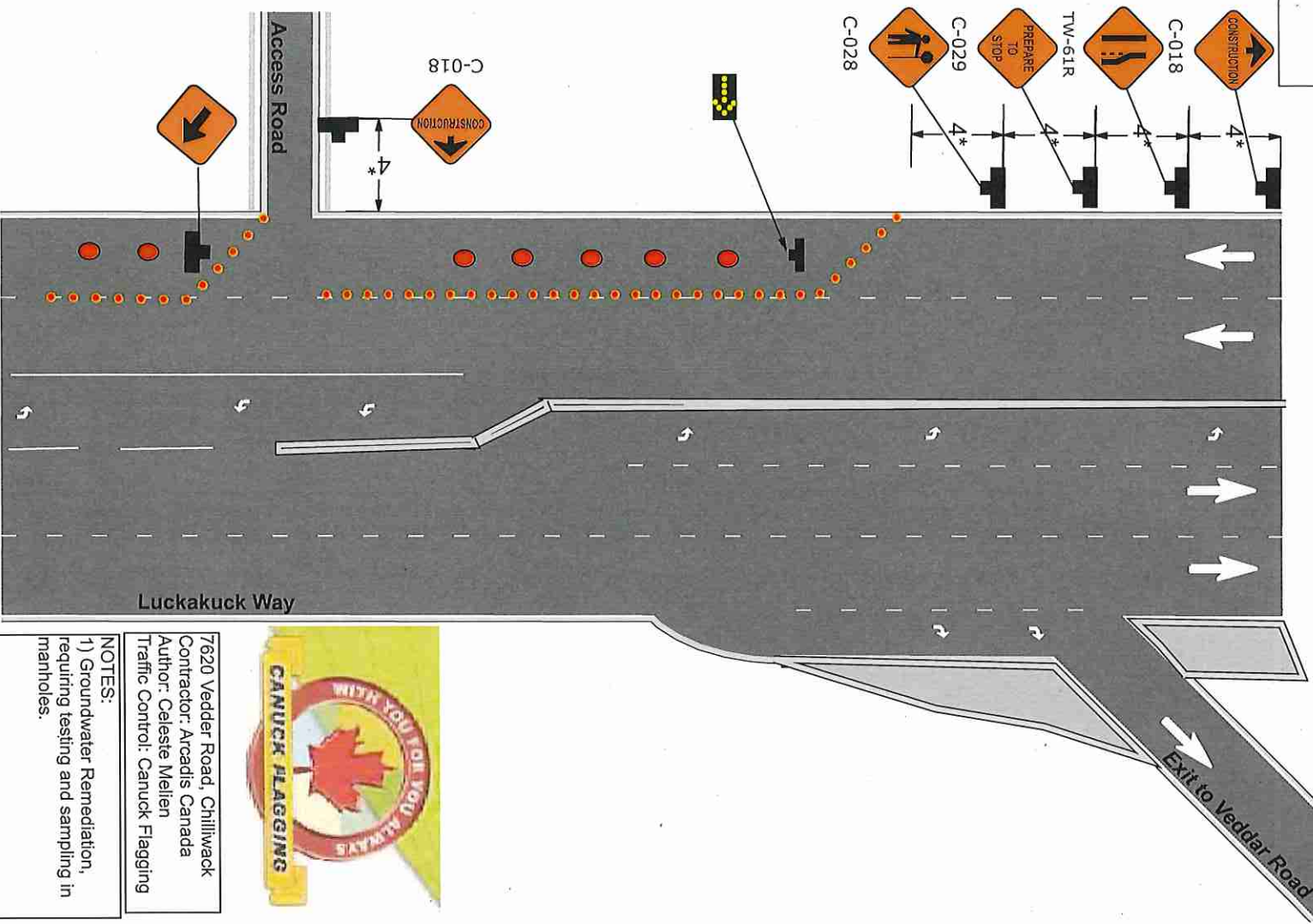


AS-BUILT SHEET PILE WALL			
Project: GROUNDWATER REMEDIATION HUSKY SITE #1422, 7620 VEDDER ROAD, CHILLIWACK, BC			
Client: HUSKY ENERGY			
Project Number: 2421-1501	Drawn By: RBC	Plot Size: 11x17"	Date: JULY 2014
			FIGURE 1

Lane Closure for Groundwater Remediation

Legend


- arrowboard (cautionary)
- Delineator
- Location (Manhole)
- Sign Stand



7620 Vedder Road, Chilliwack
 Contractor: Arcadis Canada
 Author: Celeste Mellen
 Traffic Control: Canuck Flagging






NOTES:
 1) Groundwater Remediation, requiring testing and sampling in manholes.

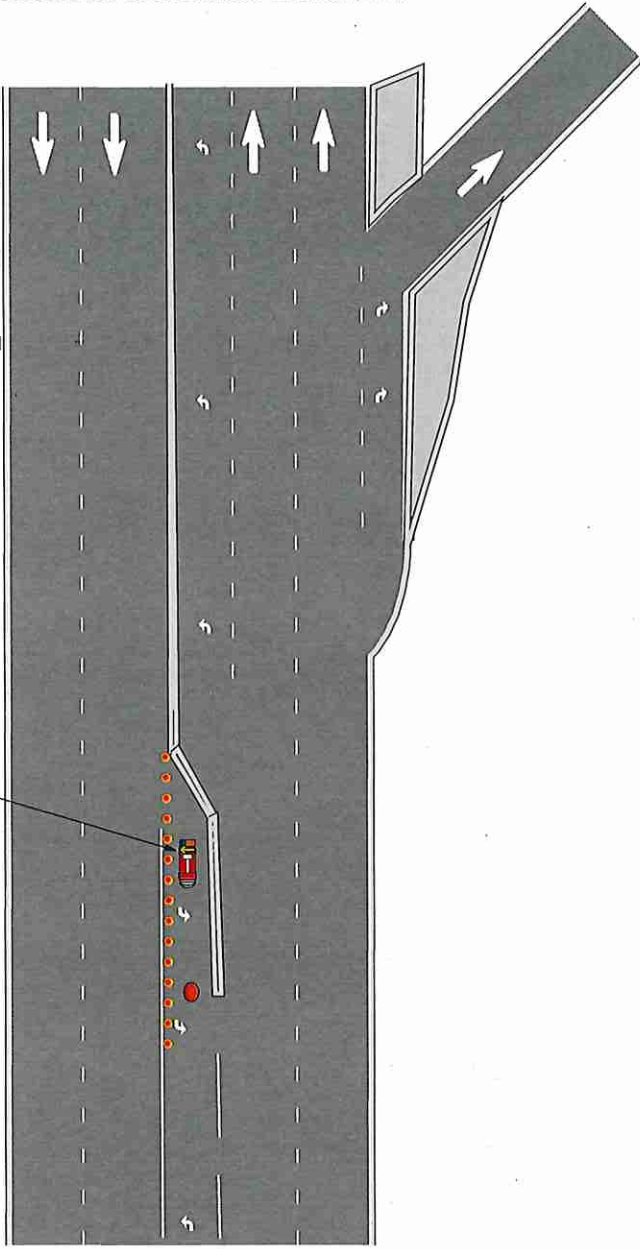
Legend

-  arrowboard (cautionary)
-  Delineator
-  Location (Manhole)
-  Buffer Truck with Arrowboard

Lane Closure for Groundwater Remediation



-  * 7'
- C-018  * 7'
- TW-61L  * 7'
- PREPARE TO STOP  * 7'
- C-029  * 7'
- C-028



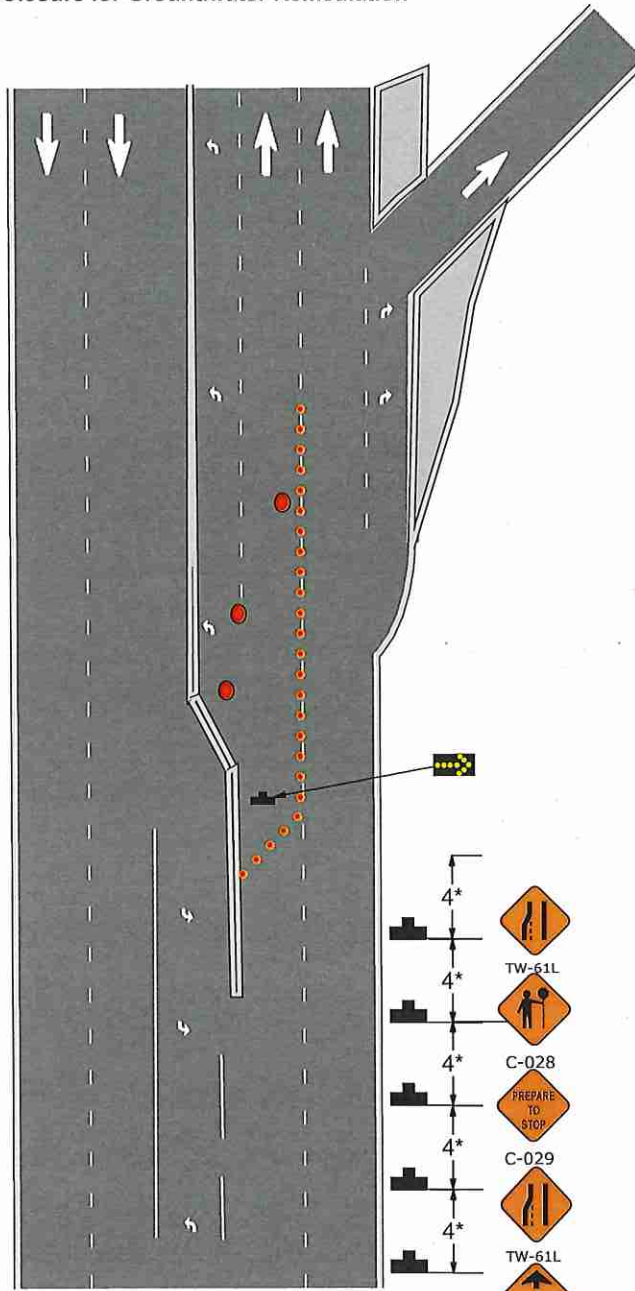
7620 Vedder Road, Chilliwack
 Contractor: Franz Environmental
 Author: Celeste Melien
 Traffic Control: Canuck Flagging

NOTES:
 1) Groundwater Remediation,
 requiring testing and sampling in
 manholes.

Legend

- Location
- ▢ arrowboard (cautionary)
- Delineator

Lane Closure for Groundwater Remediation



7620 Vedder Road, Chilliwack
 Contractor: Franz Environmental
 Author: Celeste Mellen
 Traffic Control: Canuck Flagging

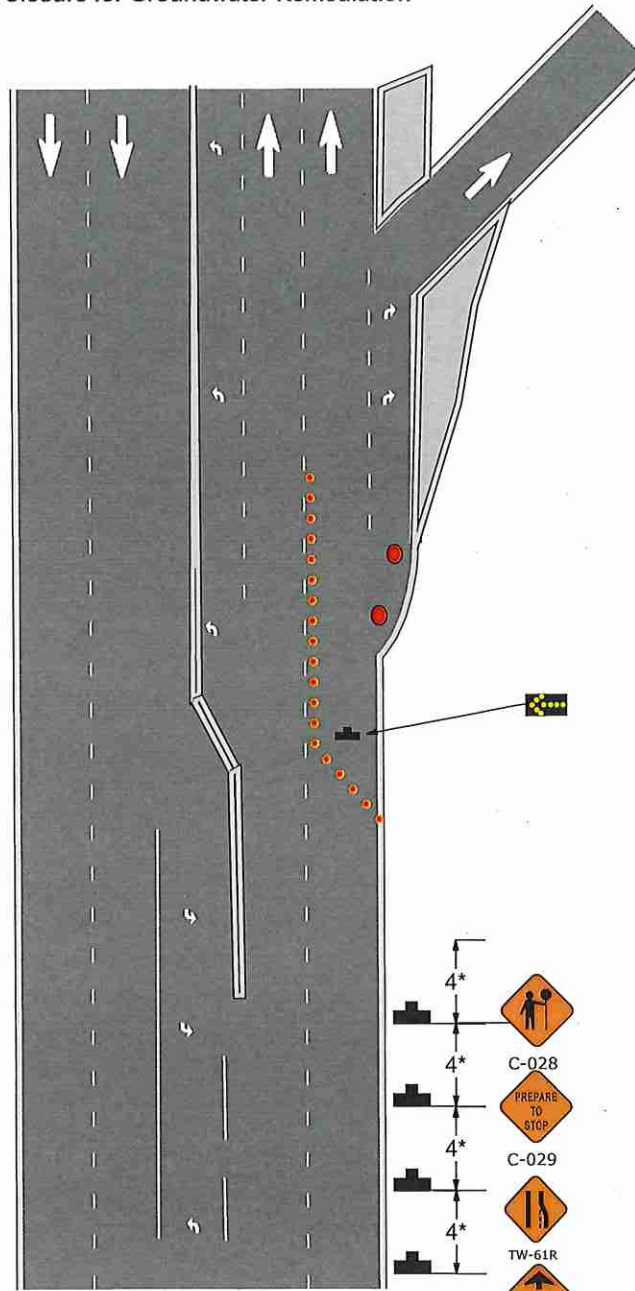
NOTES:
 1) Groundwater Remediation,
 requiring testing and sampling in
 manholes.

4*
 TW-61L
 4*
 C-028
 PREPARE TO STOP
 4*
 C-029
 4*
 TW-61L
 4*
 C-018

Lane Closure for Groundwater Remediation

Legend

- Location
- arrowboard (cautionary)
- Delineator



7620 Vedder Road, Chilliwack
 Contractor: Franz Environmental
 Author: Celeste Melien
 Traffic Control: Canuck Flagging

NOTES:
 1) Groundwater Remediation,
 requiring testing and sampling in
 manholes.

4*
 4*
 4*
 4*

C-028
 PREPARE TO STOP
 C-029
 TW-61R
 CONSTRUCTION
 C-018